



SIGNAL ANALYSER FIRMWARE UPGRADE INSTRUCTIONS

UPGRADE PROCEDURE

Signal Analyser Firmware Upgrade Instructions

Upgrade Procedure

Step 1

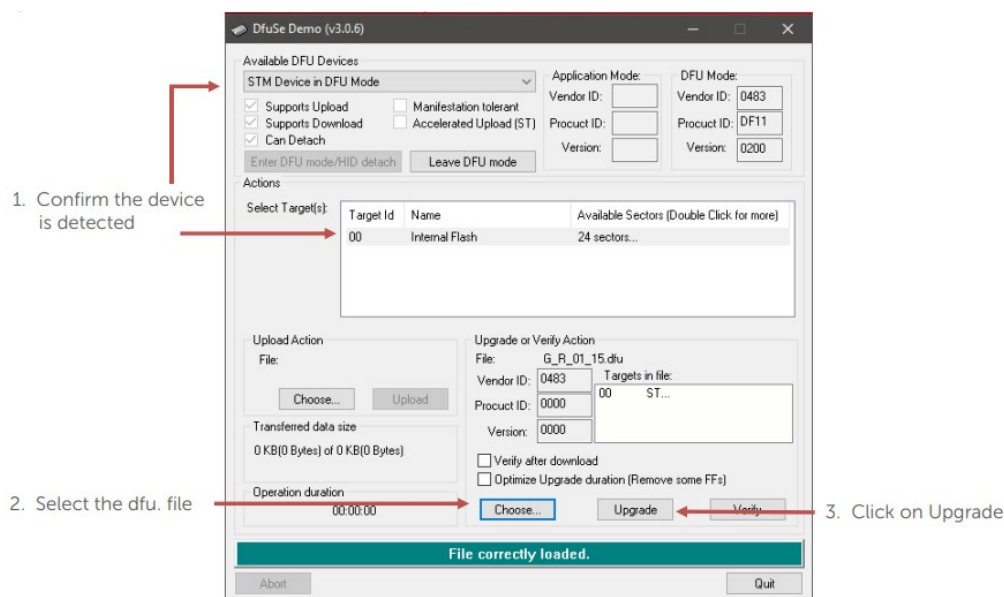
Contact your distributor/place of purchase to receive the DfuSe Demo Software required.

Step 2

With your Signal Analyser powered off, press and hold the 'quick survey' button whilst inserting your USB cable into the Signal Analyser and into your PC/Laptop. Once both are connected, release the button. The green LED will flash repeatedly to confirm you are in upgrade mode.

Step 3

Open the DfuSe Demo Software and follow the points below.



Step 4

Accept any pop-up messages from the DFuSe software to proceed with the upgrade. Once loaded the software will show that the firmware upgrade has been successful/unsuccessful via the green progress bar.

Step 5

Unplug the USB cable and restart the Signal Analyser. On start up the Signal

Analysers will display the firmware version
(ie G_1_15).

Step 6

It is recommended to format the Signal Analyser once a firmware update has been completed. On your PC/laptop enter the [Computer] menu, locate the Signal Analyser, right click and select format. Click start to format the drive (see image on next page).

