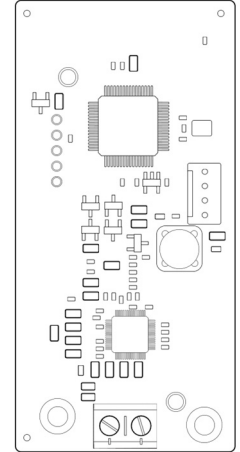


# Modem Capture Module (MCM) Quick Guide

## PRODUCT DESCRIPTION

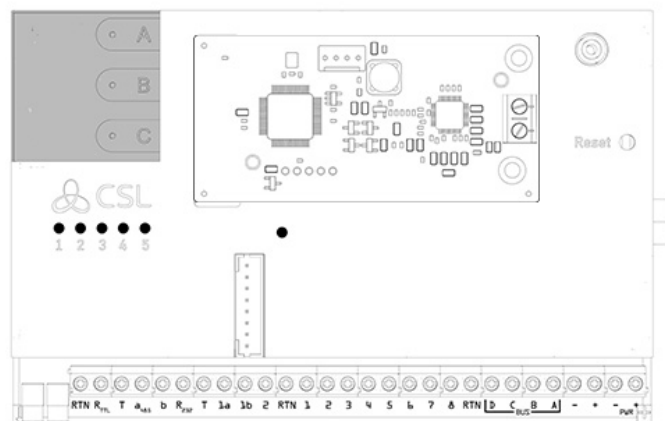
Product Code: CS.1.402

The Modem Capture Module (MCM) is designed to integrate between the DualCom Pro and an Intruder Alarm Panel's Digital Communicator (Digi). The MCM emulates a telephone line (PSTN) for Digi connectivity between the panel and the DualCom Pro. The MCM is an accessory that has been designed to couple up with the DualCom Pro.



## INSTALLATION

1. Power down the DualCom Pro.
2. Place the MCM onto the available Aux Header on the DualCom Pro.
3. Double check the DualCom Pro pins are aligned to the MCM's socket.
4. Apply gentle pressure to push the MCM onto the DualCom Pro.
5. Please use the supplied M2.5 x 6mm screw to secure the MCM onto the DualCom Pro.
6. Connect Line Terminals A & B to the Alarm Panel's Digital Communicator Terminals (Digi).
7. Re-apply power to the DualCom Pro.
8. Go to [www.csl-group.com/installer](http://www.csl-group.com/installer) for the panel integration instructions.



Please note: you must ensure the device is powered down before fitting the MCM

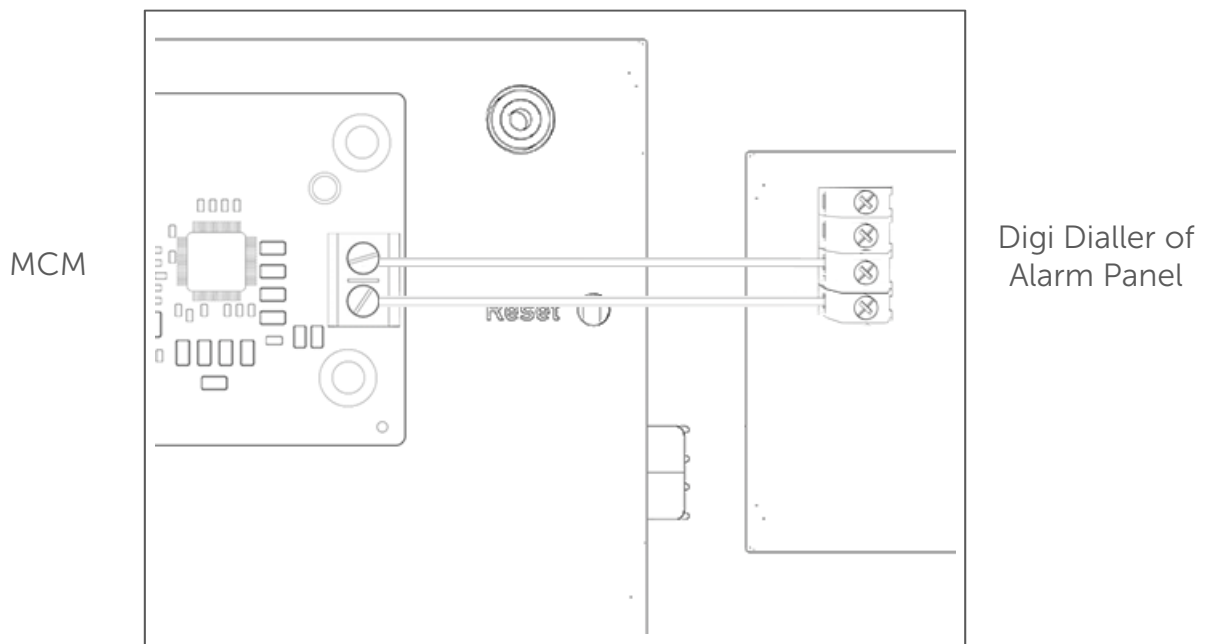
## MCM PANEL MONITORING

The DualCom Pro and MCM are normally installed in the Alarm Panel (Control Panel). Therefore, the chances of the interconnect being compromised maliciously are low. An output from the Control Panel is configured to change when the Control Panel detects a problem with the MCM interface – this is known as Line Fault.

The Control Panel Line Fault Output is connected to an input on the DualCom Pro. Input 2 should be used when wiring.

The DualCom Pro is configured to signal an equipment fault when the output changes state.

The polarity of the output and the sense of the input need to be selected to match the capabilities of the panel but should be set so that a break in the wiring results in a fault being reported.



The DualCom Pro uses one of its outputs to signal the status of the Alarm Transmission System (ATS) to the alarm panel.

### Technical Specification

Supply Voltage	10v – 36v
Current Consumption	150 mA (max)
Dimension (PCB only)	(L) 85 mm x (W) 35 mm x (H) 20 mm
Weight (Unpackaged)	25g

### Power Consumption

Power Consumption readings for the Pins Module taken as an average. (Readings taken from DualCom Pro with a Pins Module fitted).

VOLTAGE	CURRENT (AVERAGE)
10V	105mA
13.8V	55mA
36V	42mA

For more information on DualCom Pro and other products please contact CSL Technical Support:

**UK Tel:** +44 (0) 1895 474 444

**Ireland Tel:** 1800 855 695

**Email:** [support@csl-group.com](mailto:support@csl-group.com)

**Hours:** 08:30 to 18:00 weekdays, 10:00 to 16:00 Saturday