

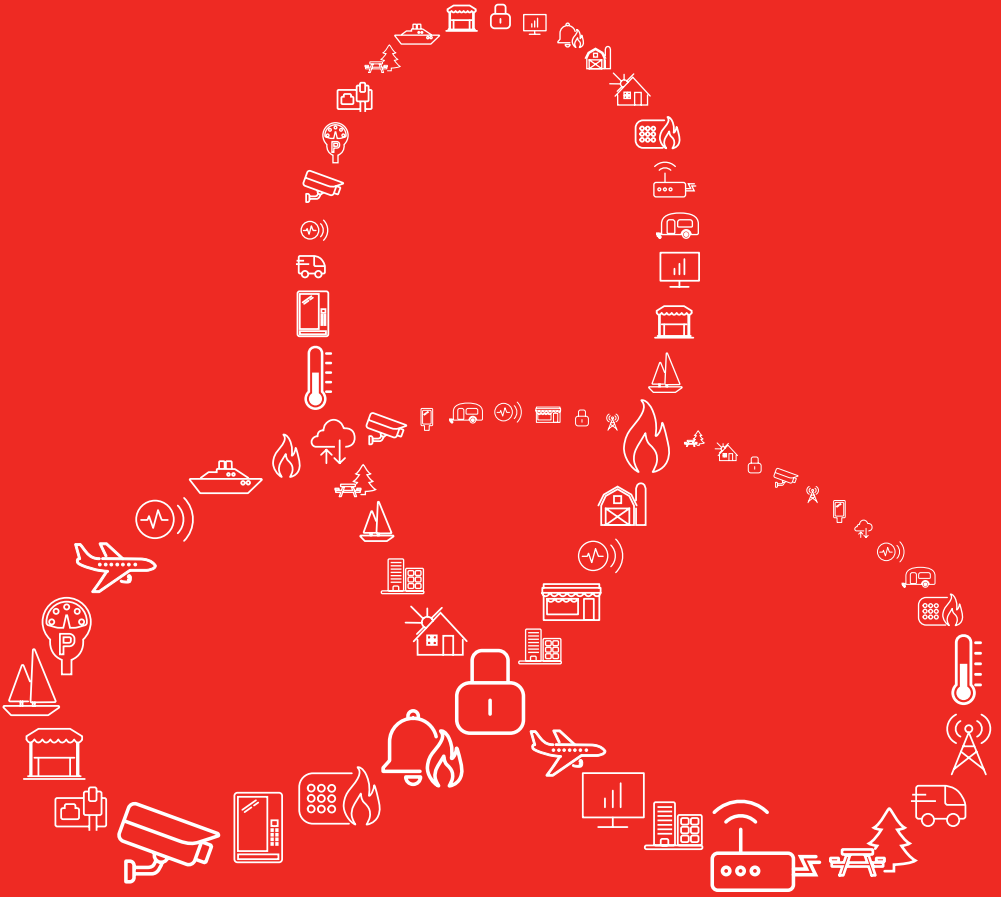


MiniAir

QUICK GUIDE &
INSTRUCTION MANUAL

CONNECTED • SECURE • LIVE

Complete Connectivity Solutions



CSL - the trusted choice

Figure 1 - MiniAir

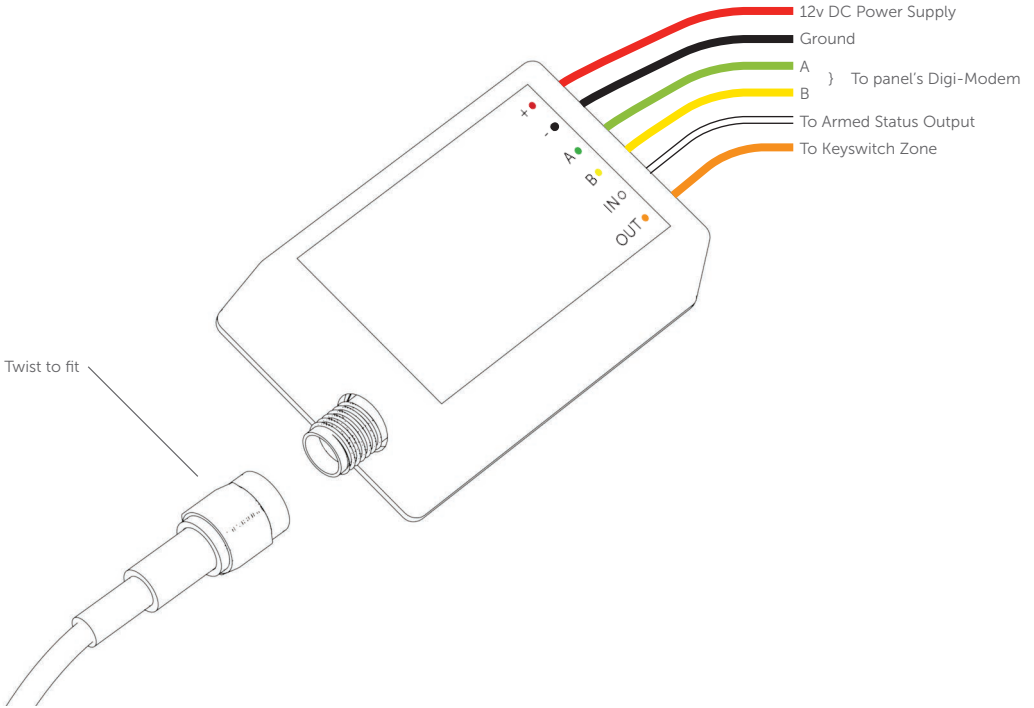


Figure 2 - LED Indications

LED STATUS			
Flashing every second	On	Flashing every 5 seconds	3 Fast flashes
Establishing connection	Good signal	Low signal	Transferring data

SITING THE ANTENNA - DOS AND DON'TS

DO...

- INSTALL IN AN OPEN SPACE
- COMPLETE A SIGNAL TEST BEFORE INSTALLING INTO FINAL POSITION
- FIT VERTICALLY
- AVOID SOURCES OF INTERFERENCE I.E. ELECTRICAL INSTALLATION, MONITORS, OTHER WIRELESS EQUIPMENT

DON'T...

- INSTALL WITHIN THE CONTROL EQUIPMENT OR WITHIN 10CM OF A METAL OBJECT

QUICK GUIDE

This section provides basic information to enable you to install and commission the MiniAir quickly. Additional information is contained in the main guide together with troubleshooting information on the CSL website.

Before installation or testing, the ARC should be contacted and system placed on test.

STEP 1. WIRING

1. Power panel down
2. Wire as per diagram on page 3
3. Connect aerial
4. LED will show connection status

STEP 2. DIAL CAPTURE

For panels with PSTN Modems:

- a. Configure PSTN dialler of alarm panel – refer to manufacturer's guide
- b. Select DTMF (tone dialling)
- c. Select CID as signalling format
- d. Enter any PSTN receiver telephone numbers (ie 01)
- e. Enter any 4 digit chip/account number (ie 1234)

STEP 3. BELL OUTPUT

For older panels with bell output, please only use the below method to trigger an alarm:

- a. Configure bell/siren output of alarm panel – refer to manufacturer's guide
- b. Wire the bell trigger to the MiniAir input (IN – white cable)
- c. Download the MiniAir Installer App for Android/iOS/Windows
- d. Log in with the credentials provided by CSL & select device by serial number/ICCID
- e. Enter Settings/Advanced Settings
- f. Depending on your panel configuration set Input pins as:
General Alarm N.O./N.C.

STEP 4. END USER APP

- a. Download the My Home Alarm app for Android/iOS/Windows
- b. Login with credentials provided at the bottom of page 6
- c. When logging in for first time change username and password & enter recovery email address
- d. Within App, select menu button and then settings option
- e. Select notifications and adapt as per the on screen instructions
- f. If you require remote arming/disarming follow step 5 of this guide
- g. Provide a demo for your customer

STEP 5. REMOTE ARM AND DISARM

Firstly, configure the panel as below:

- a. Configure a momentary keyswitch – refer to manufacturer's guide
- b. Wire OUT (orange wire) to the momentary keyswitch of the panel
- c. Configure a programmable output from the panel to Activate (switch to ground) when the panel is armed and to deactivate when disarmed – refer to manufacturer's guide
- d. Wire the programmable output to IN (white wire) on the MiniAir

Please note: A relay may be required when configuring a panel with a latching keyswitch

Secondly, configure the App:

- a. Enable Open/Close reporting on the panel
- b. Enable arming/disarming from the settings menu on the My Home Alarm App
- c. Ask the customer to enter a remote pin of their choice
- d. Arm/Disarm from the panel's keypad within 2 minutes to complete synchronisation

TROUBLESHOOTING

If you have issues receiving events try the following settings of the panel:

Disable "Telephone line monitoring"

Disable "Wait for dial tone" option

Use "A" instead of "0" in the account number

If there is more than one partition, enter an account number for each partition. For certain panels you may need to also specify an account number for the main partition (sometimes referred to as system number)

WARNINGS

Wiring should only be done when the unit is powered down

Not to be used with a landline – if a phone line is connected this will damage the unit

Ensure, once connected, the aerial is positioned outside the panel

SPECIFICATIONS

Dimensions	30mm (h) x 45mm (w) x 15mm (d)	
Weight	25g excluding aerial	
Temperature	-20C to +60C transit, -10C to +50C operating	
Humidity	0 - 80% non-condensing	
Mounting	Any orientation	
Warranty	2 years	
Power Requirement	9.0v - 17.0v DC	
Current Consumption	Quiescent = 15 mA. Signalling = 200 mA	
LED Indications	LED	Function
	Flashing every second	Establishing connection
	On	Good signal
	Flashing every 5 seconds	Low signal
	3 fast flashes	Transferring data
Radio Path	GPRS service	
Aerial	50 ohm (nominal) on MMCX socket	
CIE Interconnections	1 Digital Input, 1 Digital Output and Analogue (Dial Capture)	
RCT Protocols	Contact ID	
User Serviceable Parts	There are no user serviceable parts within MiniAir	
Standards	Suitable for use in alarm systems complying to: EN50136-1:2012 SP1 ATS Classification: EN50136-1-1:1998 ATS 1/Grade 1	

SUPPORT

For more information on MiniAir or other DualCom products please contact CSL Technical Support:

UK Tel: +44 (0)1895 474 444
 Ireland Tel: 1800 855 695
 Email: support@csldual.com
 Hours: 08.30 to 18.00 weekdays, 10.00 to 16.00 Saturday

Visit www.csldual.com for the latest copies of all manuals.

username/password