

DualCom Pro 2 4G Radio Module

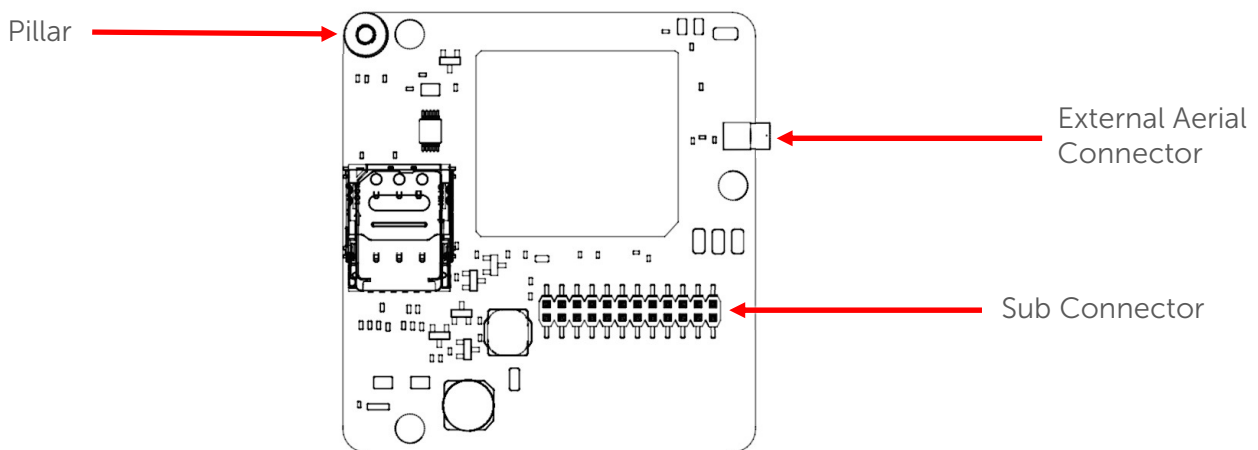


Product description

The DualCom Pro 2 4G Radio Module allows you to upgrade an existing/new DualCom Pro 2 installation with an additional 4G signalling path. This Module is to be installed directly onto the DualCom Pro 2 PCB.

When upgrading you must ensure you follow the regrades process as additional configuration changes are required to successfully regrade. For further information on this process, please follow this link: <https://www.youtube.com/watch?v=aXICjc0dOMU>

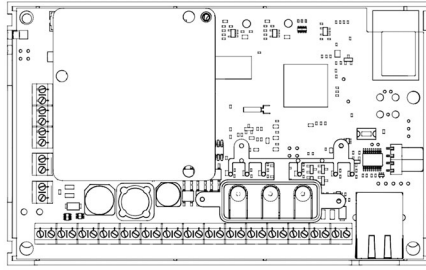
Figure 1 – Diagram for back of the DualCom Pro 2 4G Radio Module.



Connecting the DualCom Pro 2 4G Radio Module directly onto the device:

1. Ensure the DualCom Pro 2 and alarm system are powered down before connecting the device.
2. Carefully remove the lid from the device.
3. Connect the 4G Radio Module to the sub connector, making sure that it is correctly aligned and fits the supplied retaining screw to hold the board in place.
4. Re-attach the lid to the device.
5. Connect the aerial (see Figure 1).
6. Power up the alarm system and the DualCom Pro 2.

Figure 2 – A DualCom Pro 2 4G Radio Module, correctly connected onto the device



The DualCom Pro 2 4G Radio module can only be connected directly on to the PCB.

Technical Specifications:

Supply Voltage	13.5v
Current Consumption	33mA (average) 200 mA (max)
Dimension (PCB Only)	(L) 55mm x (W) 11mm x (H) 58mm
Weight (Unpackaged)	20g