

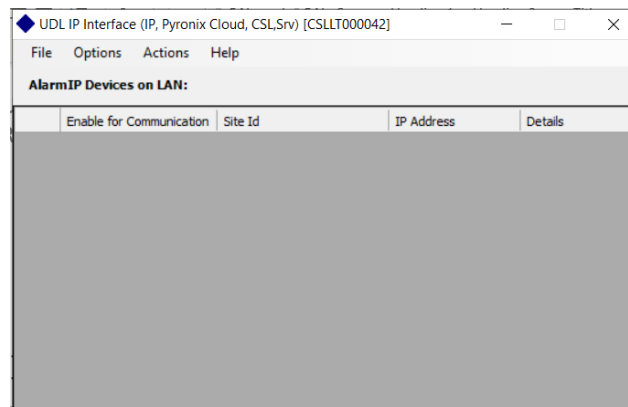
DualCom Pro UDL Setup for Pyronix and GradeShift port conflict

If using DualCom Pro and DualCom GradeShift UDL on the same PC/Insite software

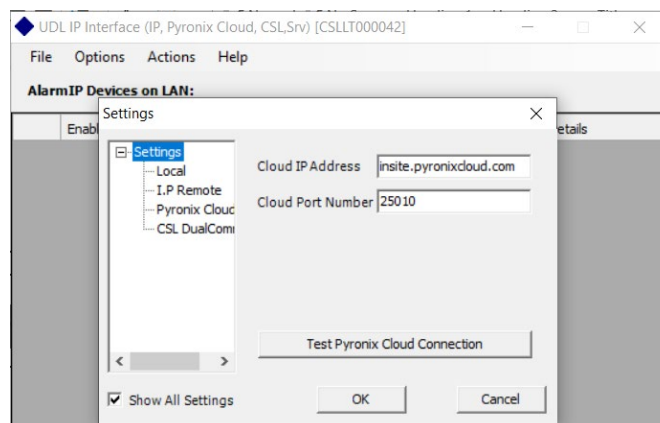
1. DualCom GradeShift and DualCom Pro use the same CSL out within Insite, but on different ports
2. Open the Pyronix UDL IP Interface, this will be located in your hidden icons and looks like the below icon, double click to open



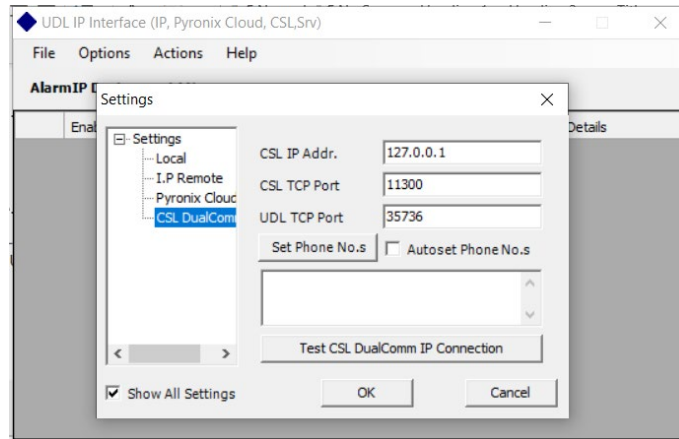
3. You should then see the below:



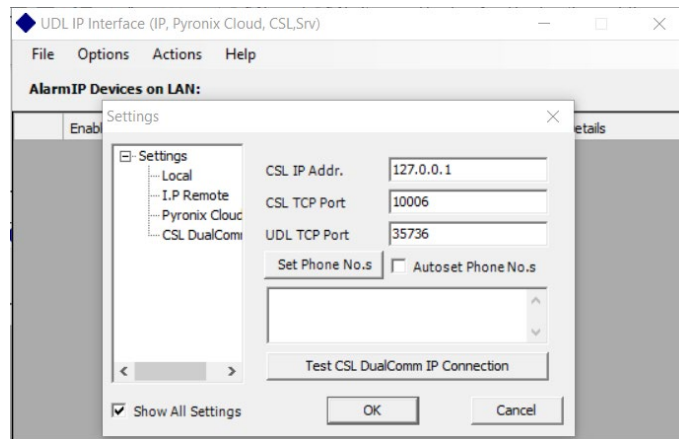
4. Select, Options, then settings, which should show the below:



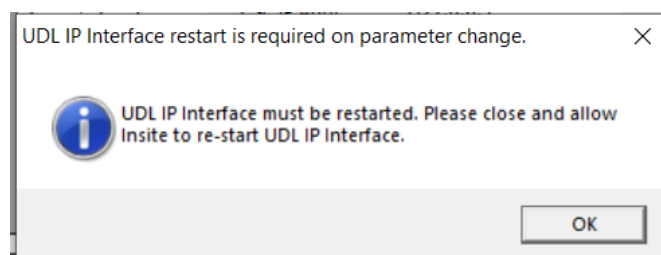
5. Select CSL DualCom, Port 11300 for the Pro as per below:



- Or Port 10006 for GradeShift as per below. Please note for bespoke setups another port may have been used, so replicate what the CSL Agent, set to Castle IP Clear is listening on



- Press OK, then the below prompt will pop up, press OK



- Then press ok on the settings box
- Then close the UDL IP Interface, this will restart the Interface and the setup is now complete
- Note, this procedure has to be done each time you wish to connect to either DualCom Pro or DualCom GradeShift UDL