

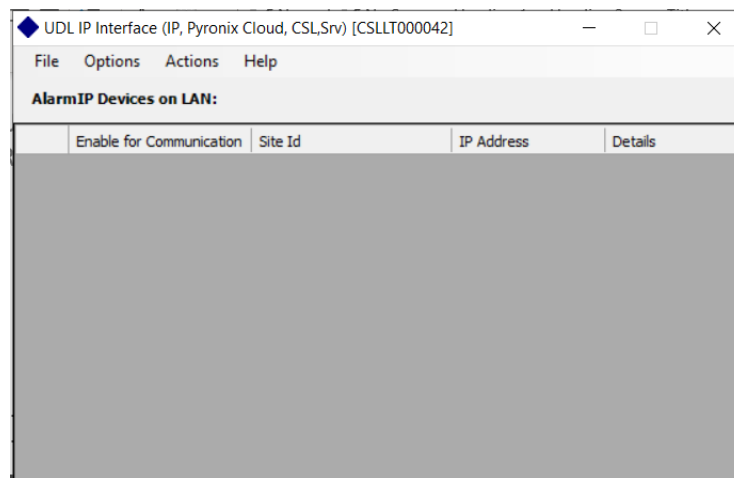
# DualCom Pro UDL Setup for Pyronix

## Initial onetime setup

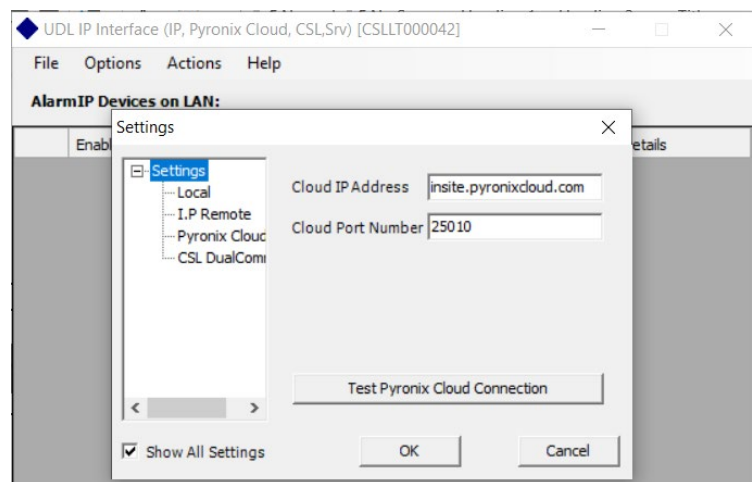
1. Open your Insite software
2. Then open the Pyronix UDL IP Interface, this will be located in your hidden icons and looks like the below icon, double click to open



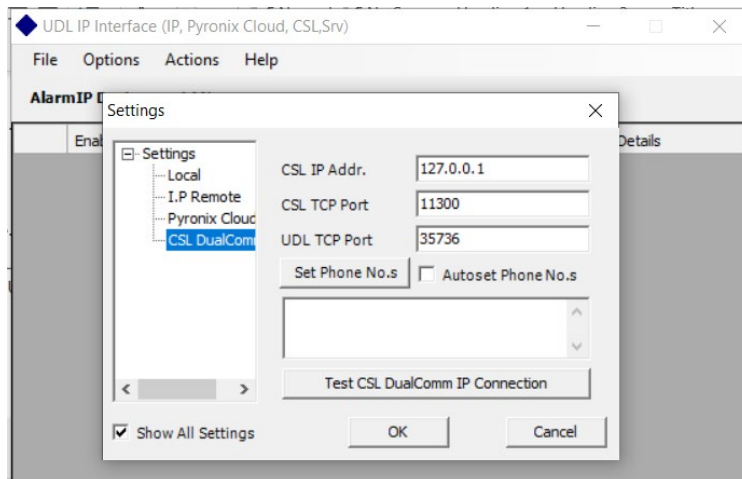
3. You should then see the below:



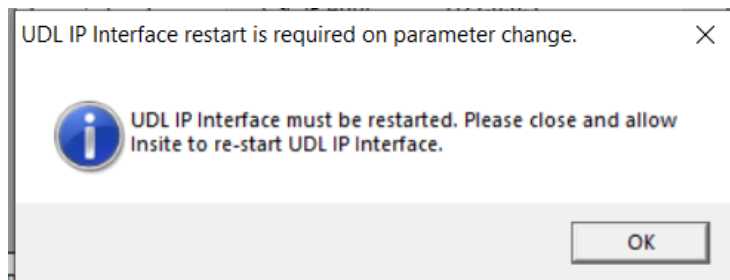
4. Select, Options, then settings, which should show the below:



5. Select CSL DualCom, then change details to as per below:



6. Press ok, then the below prompt will pop up, press ok



7. Then press ok on the settings box
8. Then close the UDL IP Interface, this will restart the Interface and the setup is now complete

## Connecting to the panel

1. Login to MyBase <https://mybase.csl-group.com/>
2. Now revert to the Insite software and hit Roving dial
3. Drop down the dial out mode to CSL out
4. Enter the Dualcom Pro Connection ID of the site you wish to connect to, info located in MyBase, into the Telephone number area
5. Enter all other credentials as normal
6. If site name has been entered in the panel, please remember this is case sensitive. See below example

Roving Dial Customer

Dial Out Mode: CSL Out

Telephone Number: 12345678

System Password: ian1234

System Security Level: Normal

Engineer Code: ????

Site Name (Entered On Panel): Replicate panel setting

Shared Line: No

Shared Rings: 2

Enter Customer In Database As: Site Name (Mr & Mrs Smith)

Status:

Dial Cancel

7. Now press Dial
8. Once connected the info bar at the bottom of the Insite software should show Blue on the CSL out as per below and a prompt will inform you that you have successfully connected to the site. Press ok



9. You can then add the site, save and upload the panel data as normal