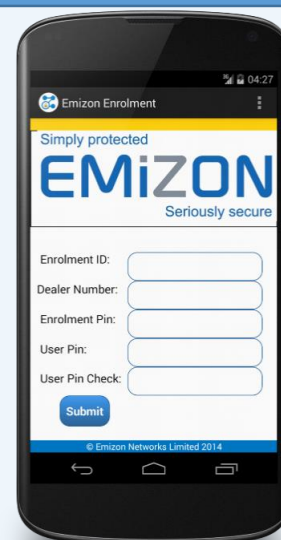


User**Step 1.**

On any Emizon App; Select the top right action button (3 dots on Android) and select enrolment

**Step 2.**

Contact your installation manager, they will give you the enrolment details, enter these, and create your user pin.

**Installation Manager****Step 1.**

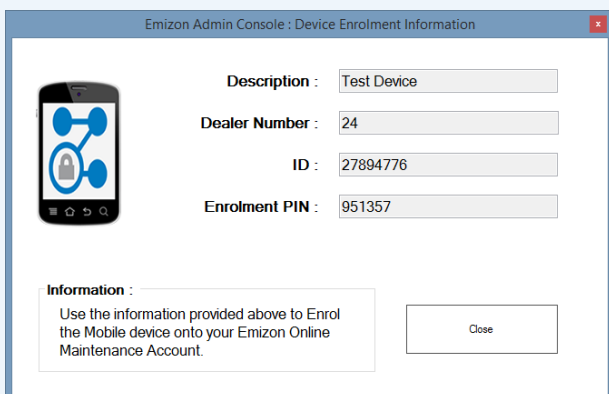
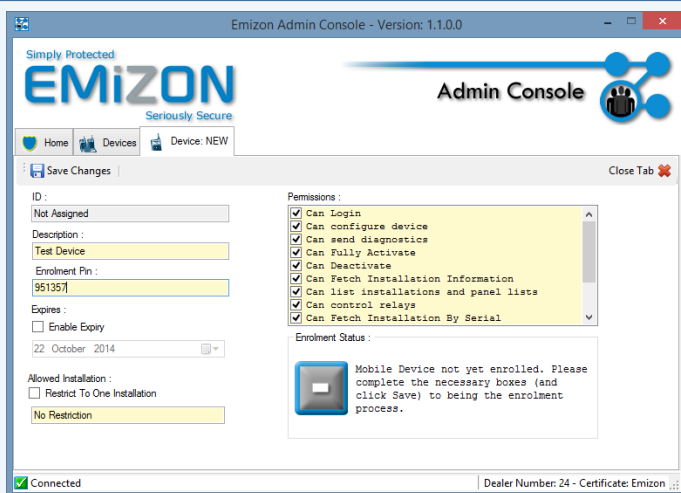
Download Emizon Admin Console from <http://online.emizon.com/downloads/> Check the correct certificate is being used and click "Manage Devices"

**Step 2.**

Select "Add Mobile Device", fill the required fields and select permissions.

**Step 3.**

Save changes, and give your user the "Dealer Number", "ID", and "Enrolment PIN"

**Document History**

Version	Date Released	Author	Comment
1.0	4-Feb-15	Sam Parsons	First Release